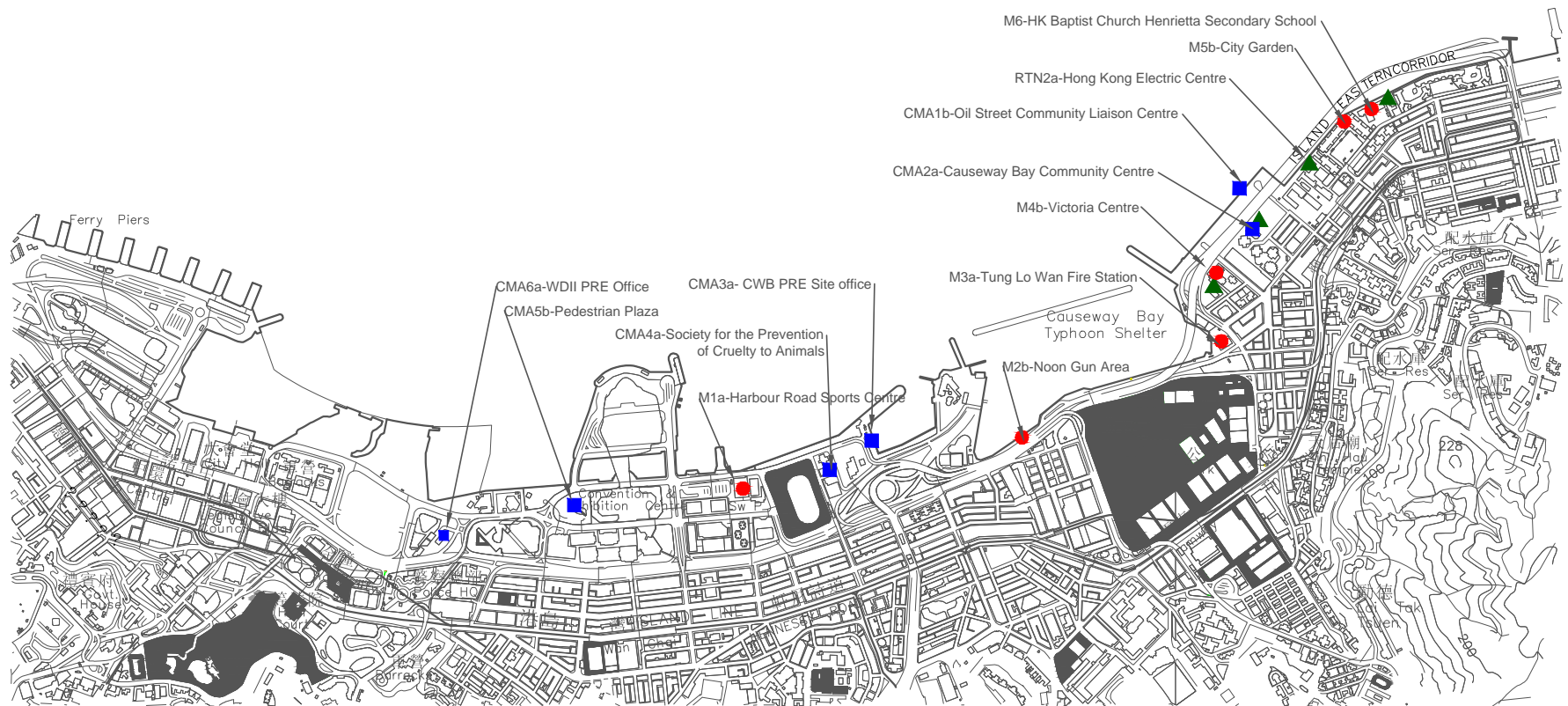


### Legend

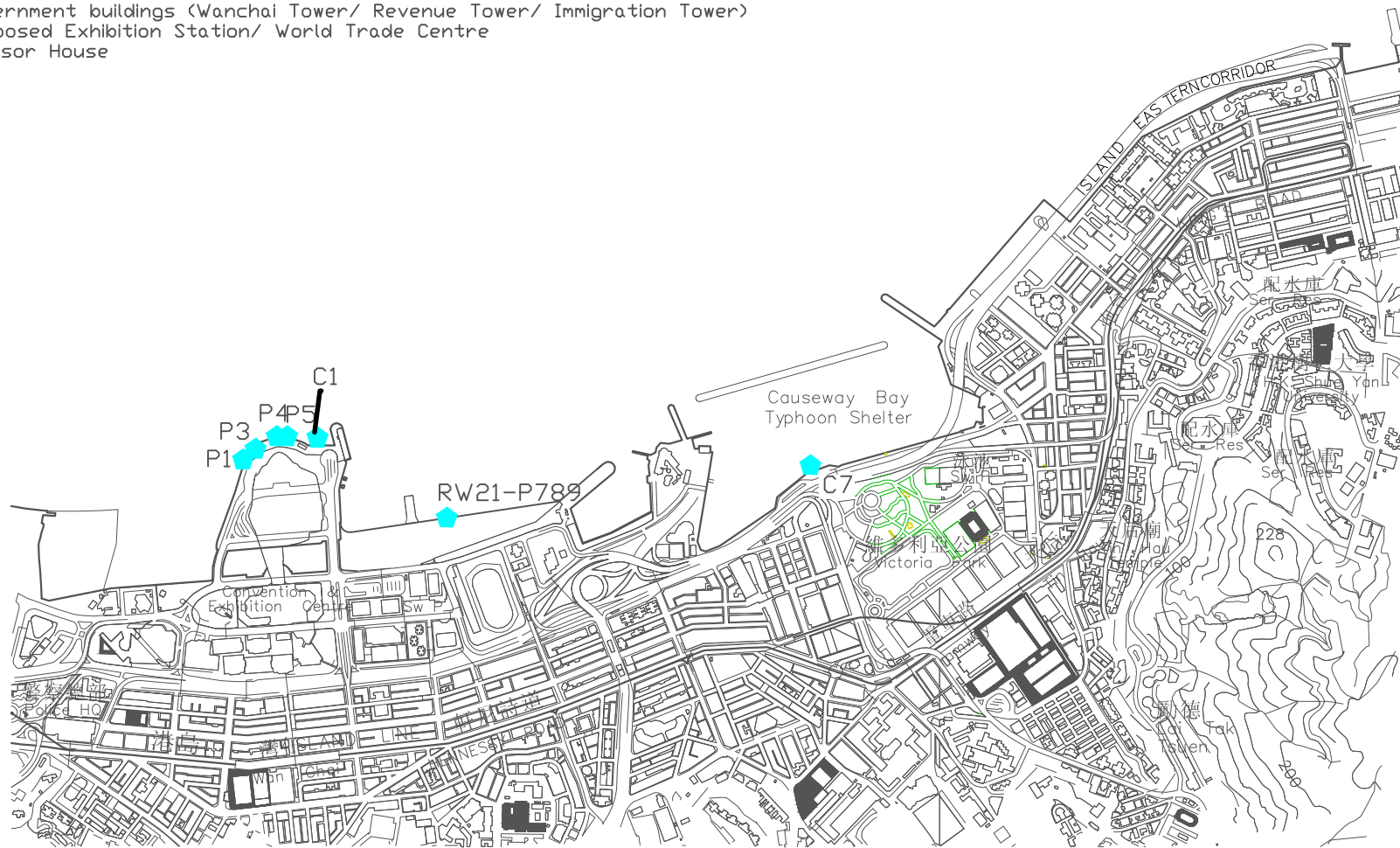
- Noise Monitoring Station
- Air Monitoring Station
- ▲ Real-time Noise Monitoring Station



## LOCATIONS OF AIR QUALITY AND NOISE MONITORING STATIONS

**Legend**

- ◆ Water Quality Monitoring Stations
- RW21-P789 (Wanchai WSD intake/ Great Eagle Centre/ China Resources Centre/ Sun Hung Kai Centre)
- C1 Hong Kong Convention and Exhibition Centre Extension
- P1 Hong Kong Convention and Exhibition Centre Phase 1
- P3 HK Academy For Performing Art
- P4 Shui On Centre
- P5 Government buildings (Wanchai Tower/ Revenue Tower/ Immigration Tower)
- C6 Proposed Exhibition Station/ World Trade Centre
- C7 Windsor House

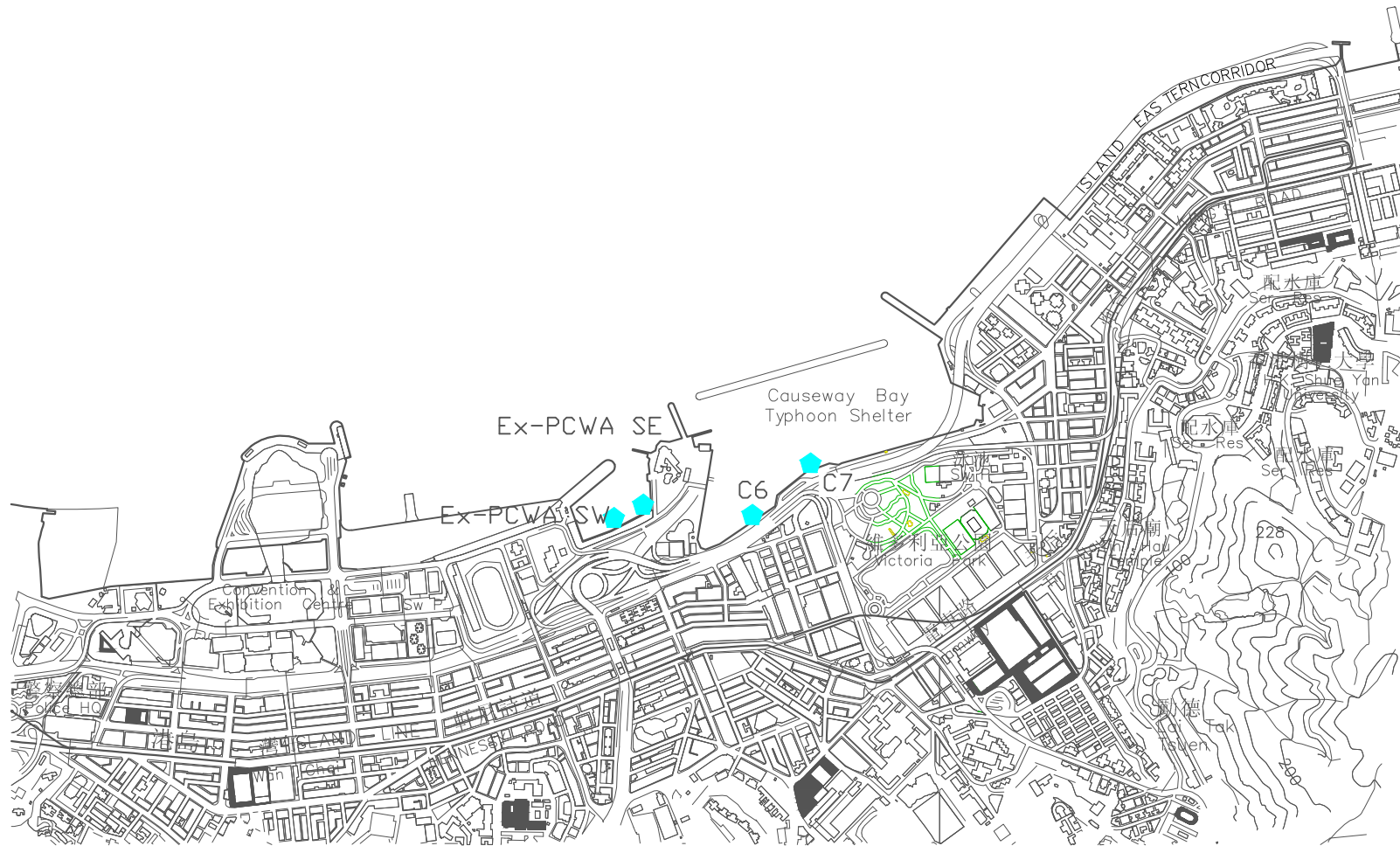


**FIGURE**

**LOCATIONS OF WATER QUALITY MONITORING STATIONS**

**Legend**

- ◆ Enhance DO Monitoring Stations
- Ex-PCWA SE Ex-Public Cargo Wanchai Area SouthEast Station
- Ex-PCWA SW Ex-Public Cargo Wanchai Area Southwest Station
- C6 Proposed Exhibition Station/ World Trade Centre
- C7 Windsor House

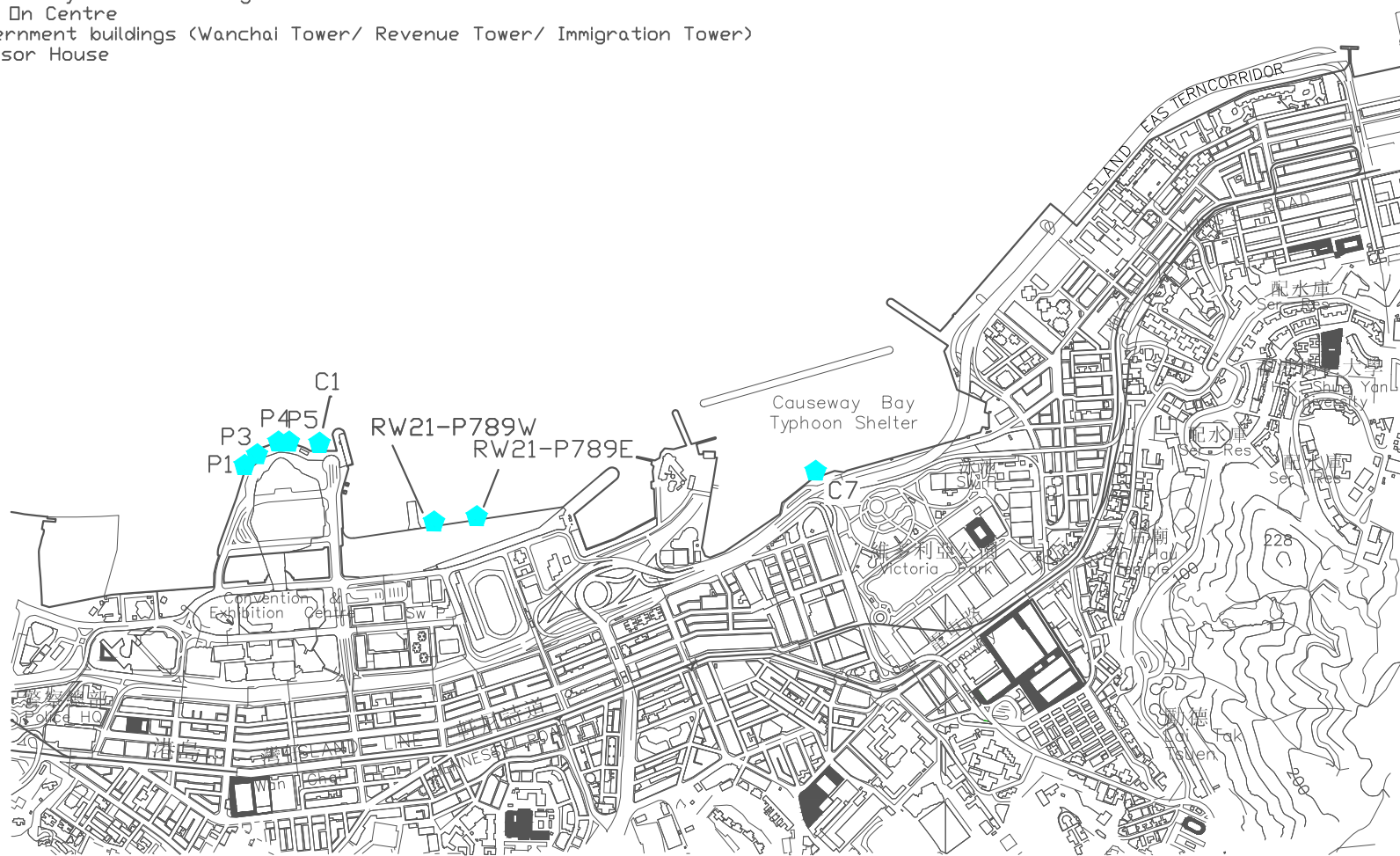


**FIGURE**

**LOCATIONS OF ENHANCE DO MONITORING STATIONS**

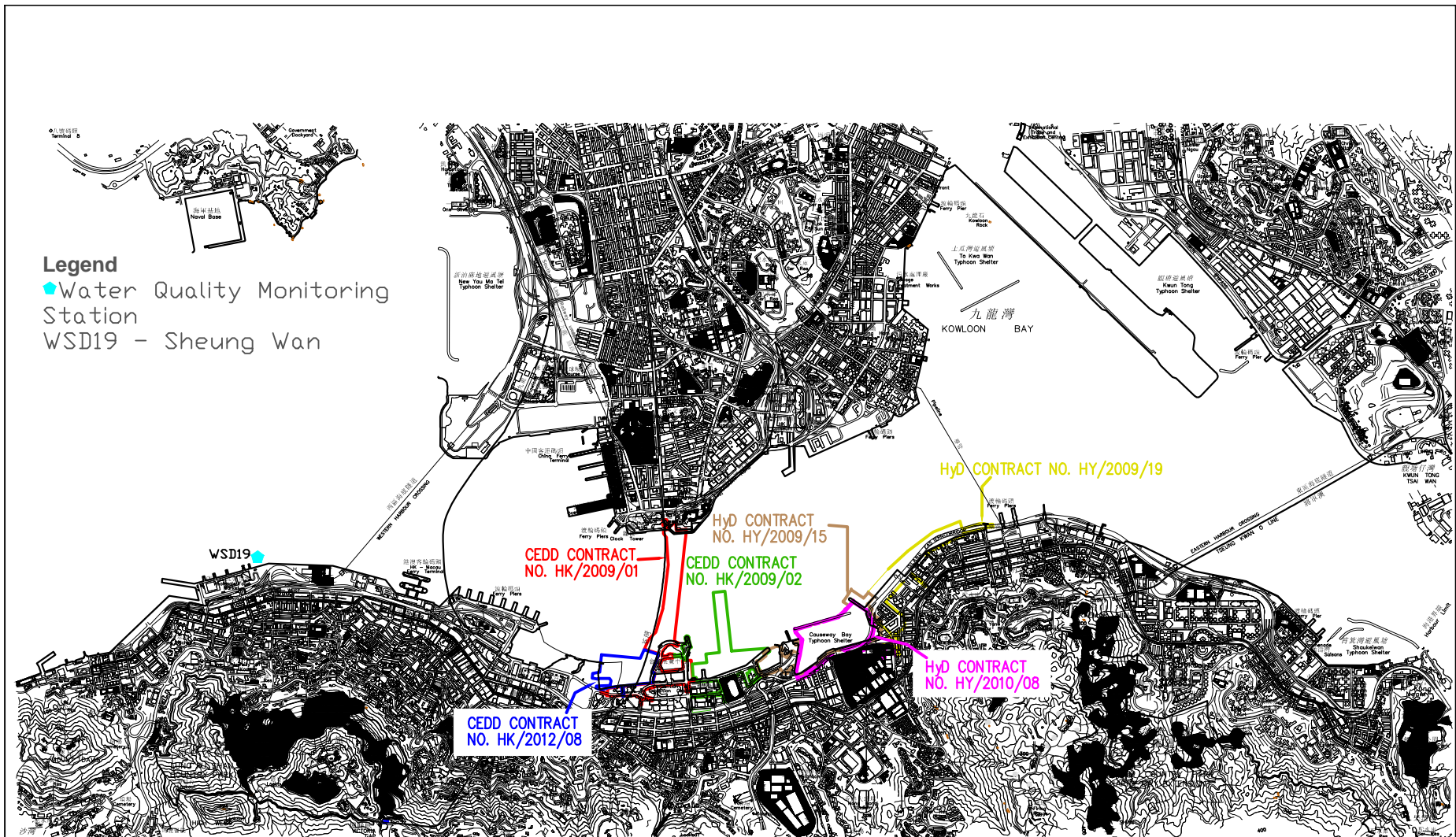
**Legend**

- ◆ Water Quality Monitoring Stations
- RW21-P789E (Wanchai WSD intake/ Great Eagle Centre/ China Resources Centre/ Sun Hung Kai Centre)
- RW21-P789W (Wanchai WSD intake/ Great Eagle Centre/ China Resources Centre/ Sun Hung Kai Centre)
- C1 Hong Kong Convention and Exhibition Centre Extension
- P1 Hong Kong Convention and Exhibition Centre Phase 1
- P3 HK Academy For Performing Art
- P4 Shui On Centre
- P5 Government buildings (Wanchai Tower/ Revenue Tower/ Immigration Tower)
- C7 Windsor House



**FIGURE**

**LOCATIONS OF WATER QUALITY MONITORING STATIONS**



**FIGURE**

**LOCATIONS OF WATER QUALITY MONITORING STATIONS**

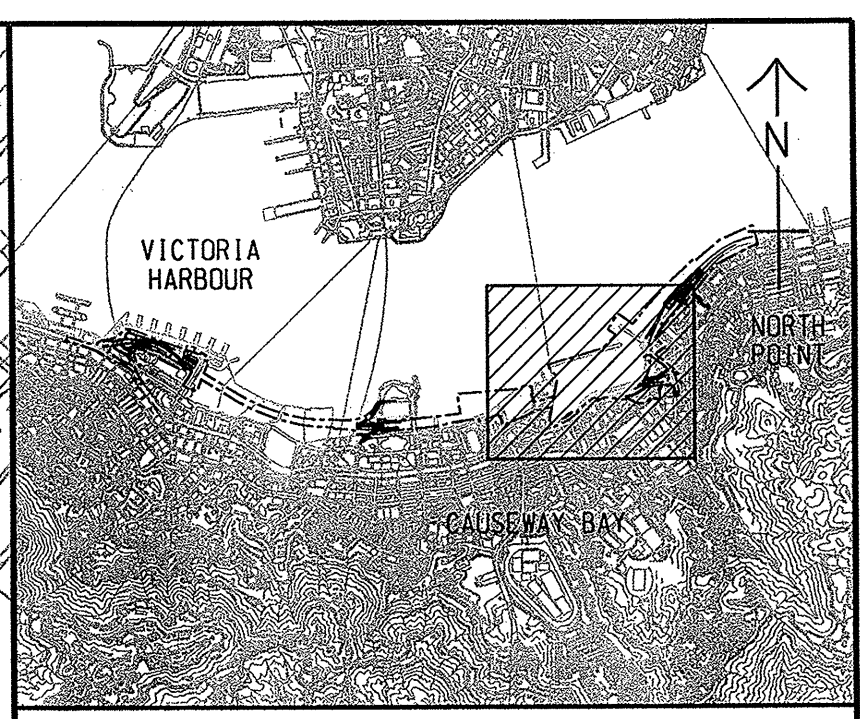
837000 E

837500 E

# VICTORIA HARBOUR

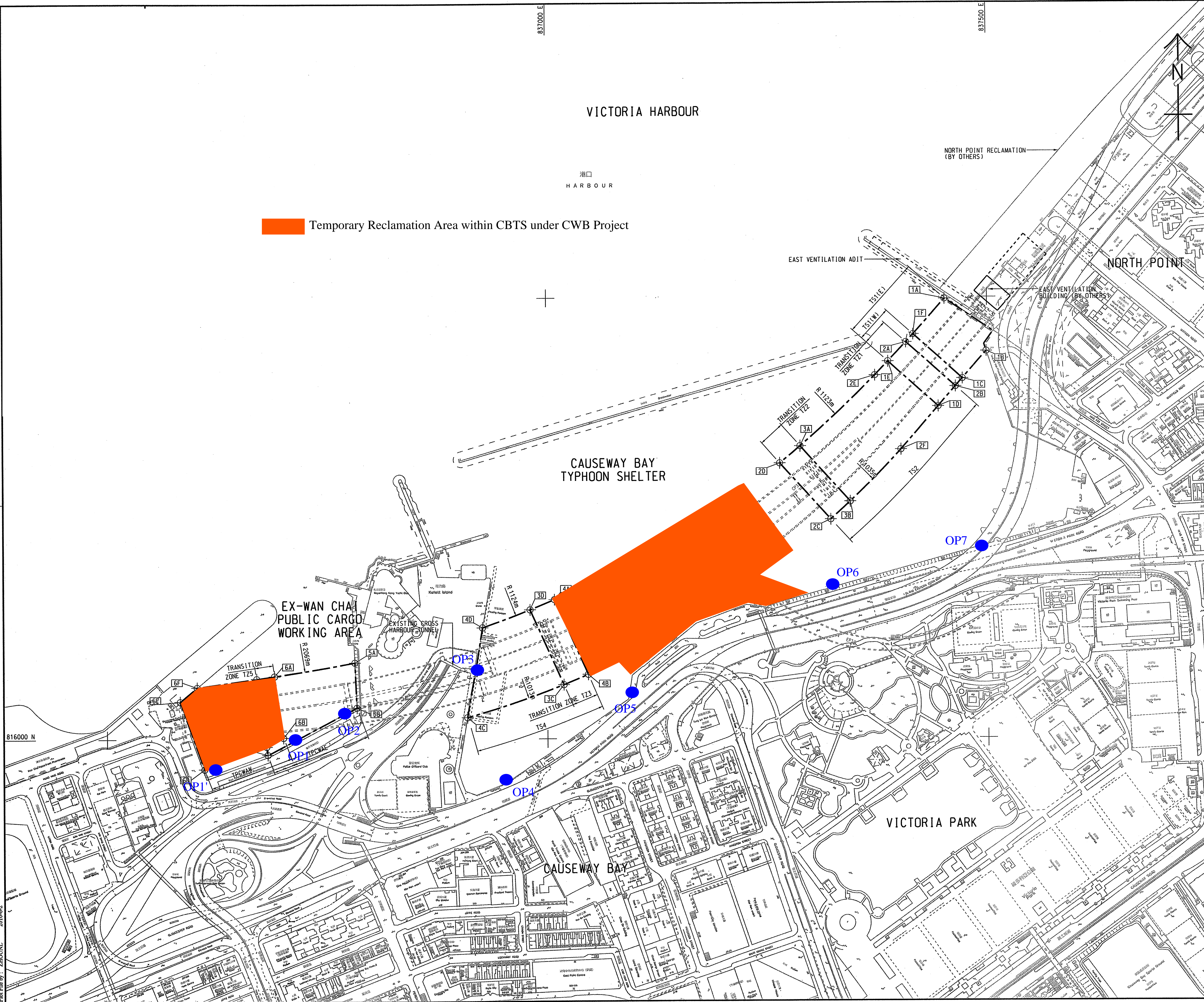
港口  
HARBOUR

 Temporary Reclamation Area within CBTS under CWB Project



**KEY PLAN**  
SCALE A1 1 : 50000  
A3 1 : 100000

With respect to the anticipated temporary reclamation removal works at Ex-PCWAW to be conducted across July 2016 to September 2016, the Odour Monitoring Station OP1' upon complete removal of entire section of southern seawall and diaphragm wall at Ex-PCWAW zone during the course of odour monitoring



Plot File by : ZHOUNG 2016-6-2